

Cal Maritime First-Time Full-Time Freshmen Retention and Graduation Rates

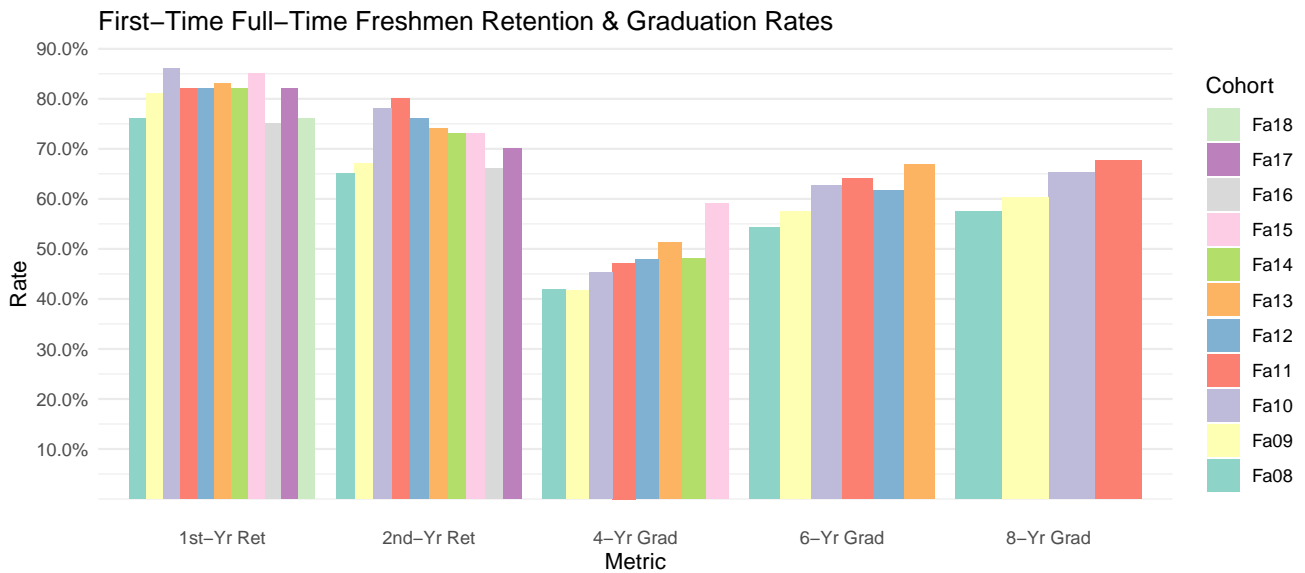
Institutional Research & Planning

November 21, 2019

Contents

1	All Students	2
2	Race/Ethnicity	3
2.1	Race/Ethnicity: White, Asian, and Pacific Islander, Two +, Unknown, Non-Res Alien	3
2.2	Race/Ethnicity: African American, Hispanic, and Native American (URM)	4
3	Gender	4
3.1	Gender: Male	5
3.2	Gender: Female	5
4	Pell Grant Award Status	6
4.1	Awarded Pell Grant: Yes	6
4.2	Awarded Pell Grant: No	7
5	Major	7
5.1	Marine Transportation	7
5.2	Facilities Engineering Technology	8
5.3	Marine Engineering Technology	8
5.4	Engineering Technology (MET + FET)	9
5.5	Mechanical Engineering	9
5.6	Business Administration	10
5.7	Global Studies and Maritime Affairs	10

1 All Students



Cohort Year	N	Retention Rate		Graduation Rate		
		1st Year	2nd Year	In 4 Years	In 6 Years	In 8 Years
Fall 2008	153	0.76	0.65	0.42	0.54	0.58
Fall 2009	146	0.81	0.67	0.42	0.58	0.60
Fall 2010	161	0.86	0.78	0.45	0.63	0.65
Fall 2011	142	0.82	0.80	0.47	0.64	0.68
Fall 2012	196	0.82	0.76	0.48	0.62	
Fall 2013	199	0.83	0.74	0.51	0.67	
Fall 2014	206	0.82	0.73	0.48		
Fall 2015	220	0.85	0.73	0.59		
Fall 2016	236	0.75	0.66			
Fall 2017	223	0.82	0.70			
Fall 2018	216	0.76				

Table 1: Freshmen Retention and Graduation: All Students

2 Race/Ethnicity

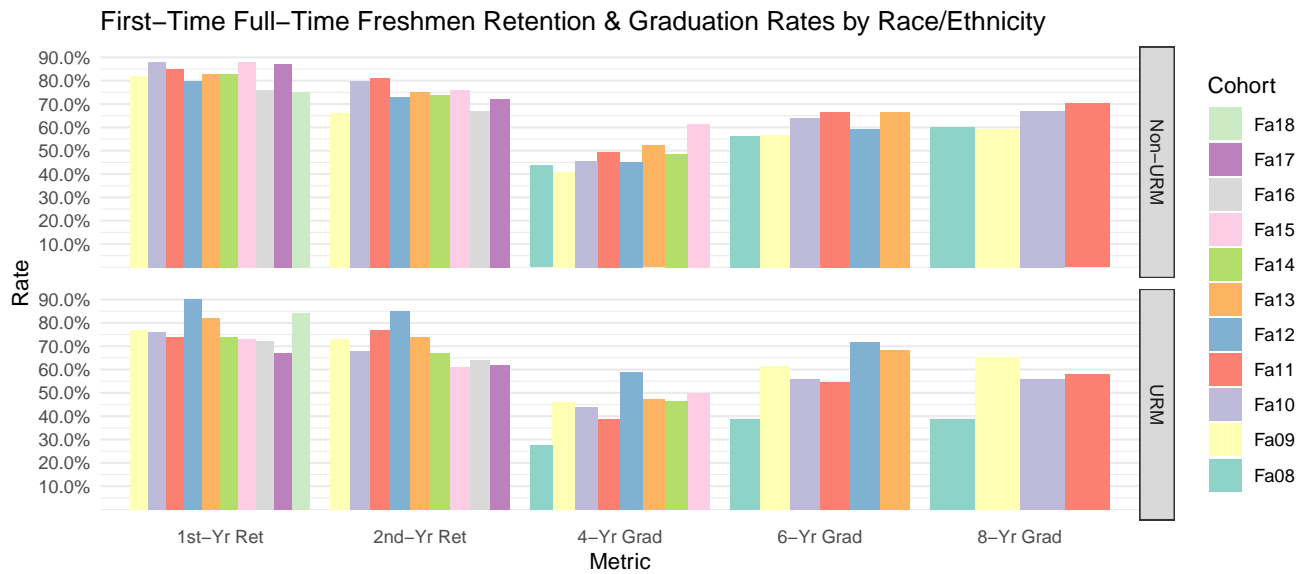


Figure 1: Retention and Graduation Rates by Race/Ethnicity - First-Time Freshmen

2.1 Race/Ethnicity: White, Asian, and Pacific Islander, Two +, Unknown, Non-Res Alien

Cohort Year	N	Retention Rate		Graduation Rate		
		1st Year	2nd Year	In 4 Years	In 6 Years	In 8 Years
Fall 2008	135	0.77	0.65	0.44	0.56	0.60
Fall 2009	120	0.82	0.66	0.41	0.57	0.59
Fall 2010	136	0.88	0.80	0.46	0.64	0.67
Fall 2011	111	0.85	0.81	0.50	0.67	0.70
Fall 2012	157	0.80	0.73	0.45	0.59	
Fall 2013	161	0.83	0.75	0.52	0.66	
Fall 2014	163	0.83	0.74	0.48		
Fall 2015	176	0.88	0.76	0.61		
Fall 2016	169	0.76	0.67			
Fall 2017	165	0.87	0.72			
Fall 2018	173	0.75				

Table 2: Freshmen Retention and Graduation by Race/Ethnicity: Non-URM All Other

2.2 Race/Ethnicity: African American, Hispanic, and Native American (URM)

Cohort Year	N	Retention Rate		Graduation Rate		
		1st Year	2nd Year	In 4 Years	In 6 Years	In 8 Years
Fall 2008	18	0.72	0.61	0.28	0.39	0.39
Fall 2009	26	0.77	0.73	0.46	0.62	0.65
Fall 2010	25	0.76	0.68	0.44	0.56	0.56
Fall 2011	31	0.74	0.77	0.39	0.55	0.58
Fall 2012	39	0.90	0.85	0.59	0.72	
Fall 2013	38	0.82	0.74	0.47	0.68	
Fall 2014	43	0.74	0.67	0.47		
Fall 2015	44	0.73	0.61	0.50		
Fall 2016	67	0.72	0.64			
Fall 2017	58	0.67	0.62			
Fall 2018	43	0.84				

Table 3: Freshmen Retention and Graduation by Race/Ethnicity: URM

3 Gender

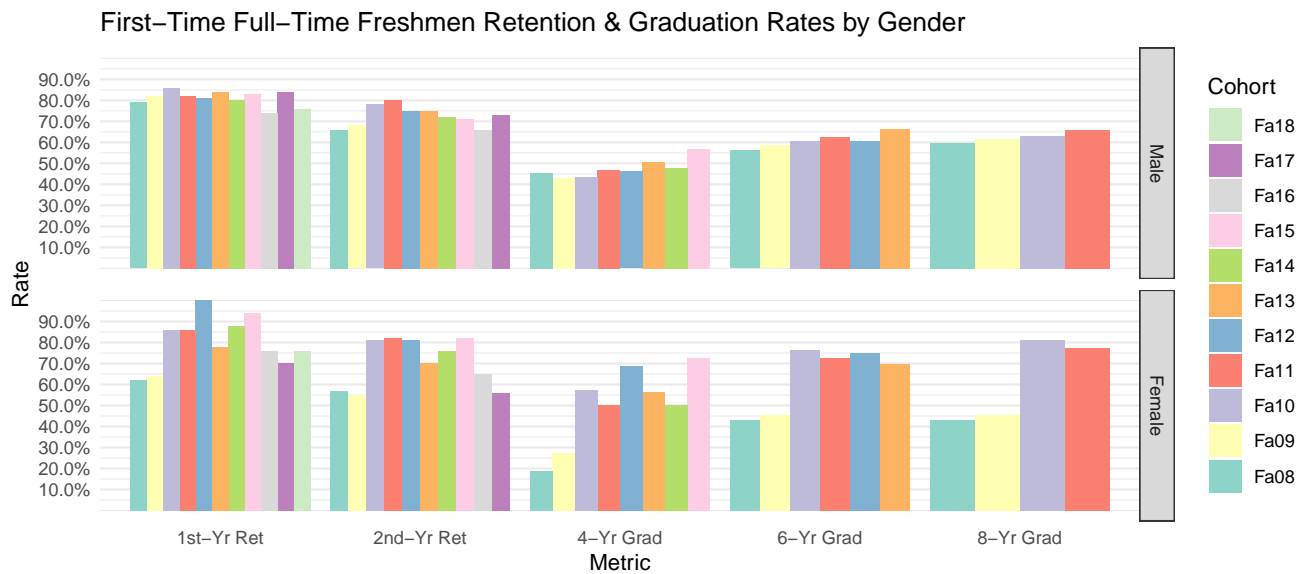


Figure 2: Retention and Graduation Rates by Gender - First-Time Freshmen

3.1 Gender: Male

Cohort Year	N	Retention Rate		Graduation Rate		
		1st Year	2nd Year	In 4 Years	In 6 Years	In 8 Years
Fall 2008	132	0.79	0.66	0.45	0.56	0.60
Fall 2009	135	0.82	0.68	0.43	0.59	0.61
Fall 2010	140	0.86	0.78	0.44	0.61	0.63
Fall 2011	120	0.82	0.80	0.47	0.62	0.66
Fall 2012	180	0.81	0.75	0.46	0.61	
Fall 2013	176	0.84	0.75	0.51	0.66	
Fall 2014	172	0.80	0.72	0.48		
Fall 2015	187	0.83	0.71	0.57		
Fall 2016	202	0.74	0.66			
Fall 2017	180	0.84	0.73			
Fall 2018	187	0.76				

Table 4: Freshmen Retention and Graduation by Gender: Male

3.2 Gender: Female

Cohort Year	N	Retention Rate		Graduation Rate		
		1st Year	2nd Year	In 4 Years	In 6 Years	In 8 Years
Fall 2008	21	0.62	0.57	0.19	0.43	0.43
Fall 2009	11	0.64	0.55	0.27	0.45	0.45
Fall 2010	21	0.86	0.81	0.57	0.76	0.81
Fall 2011	22	0.86	0.82	0.50	0.73	0.77
Fall 2012	16	1.00	0.81	0.69	0.75	
Fall 2013	23	0.78	0.70	0.57	0.70	
Fall 2014	34	0.88	0.76	0.50		
Fall 2015	33	0.94	0.82	0.73		
Fall 2016	34	0.76	0.65			
Fall 2017	43	0.70	0.56			
Fall 2018	29	0.76				

Table 5: Freshmen Retention and Graduation by Gender: Female

4 Pell Grant Award Status

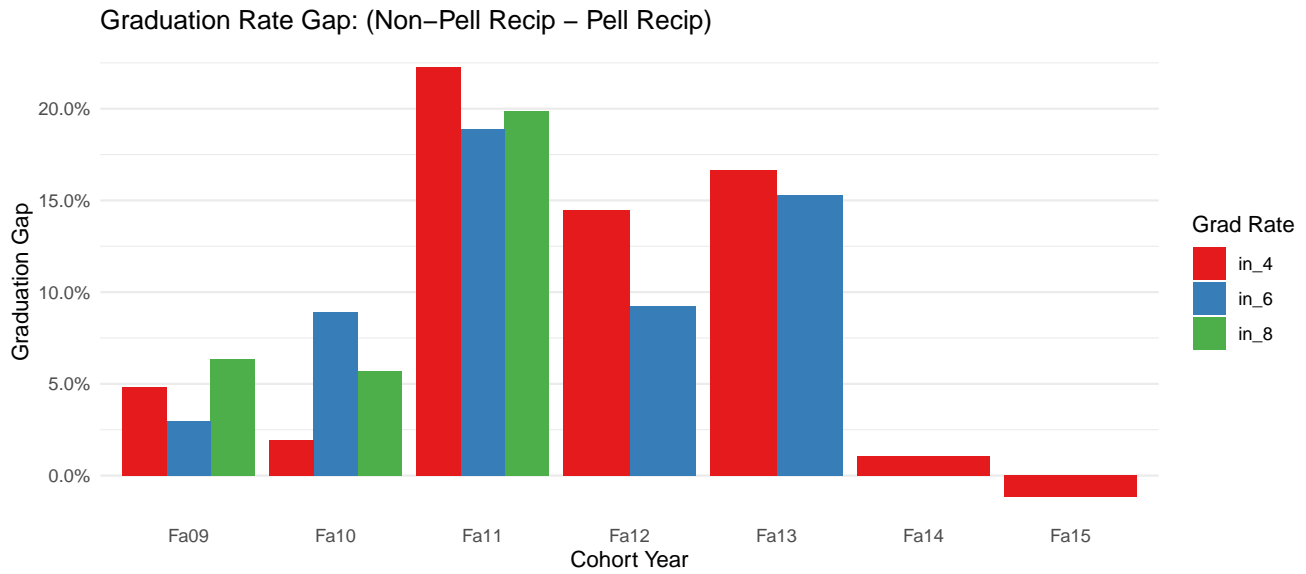


Figure 3: Retention and Graduation Rates by Pell Grant Status - First-Time Freshmen

4.1 Awarded Pell Grant: Yes

Cohort Year	N	Retention Rate		Graduation Rate		
		1st Year	2nd Year	In 4 Years	In 6 Years	In 8 Years
Fall 2009	29	0.69	0.66	0.38	0.55	0.55
Fall 2010	41	0.93	0.80	0.44	0.56	0.61
Fall 2011	36	0.72	0.69	0.31	0.50	0.53
Fall 2012	51	0.76	0.73	0.37	0.55	
Fall 2013	42	0.74	0.64	0.38	0.55	
Fall 2014	55	0.87	0.76	0.47		
Fall 2015	50	0.82	0.72	0.60		
Fall 2016	48	0.98	0.88			
Fall 2017	55	0.73	0.67			
Fall 2018	48	0.81				

Table 6: Freshmen Retention and Graduation by Pell Grant Status: Yes

4.2 Awarded Pell Grant: No

Cohort Year	N	Retention Rate		Graduation Rate		
		1st Year	2nd Year	In 4 Years	In 6 Years	In 8 Years
Fall 2009	117	0.84	0.68	0.43	0.58	0.62
Fall 2010	120	0.84	0.78	0.46	0.65	0.67
Fall 2011	106	0.86	0.84	0.53	0.69	0.73
Fall 2012	145	0.84	0.77	0.52	0.64	
Fall 2013	157	0.85	0.77	0.55	0.70	
Fall 2014	151	0.79	0.72	0.48		
Fall 2015	170	0.86	0.73	0.59		
Fall 2016	188	0.69	0.61			
Fall 2017	168	0.85	0.70			
Fall 2018	168	0.75				

Table 7: Freshmen Retention and Graduation by Pell Grant Status: No

5 Major

5.1 Marine Transportation

Cohort Year	N	Retention Rate		Graduation Rate		
		1st Year	2nd Year	In 4 Years	In 6 Years	In 8 Years
Fall 2008	61	0.82	0.72	0.57	0.64	0.69
Fall 2009	53	0.91	0.79	0.55	0.68	0.74
Fall 2010	53	0.94	0.89	0.77	0.81	0.83
Fall 2011	36	0.81	0.72	0.53	0.56	0.61
Fall 2012	41	0.78	0.71	0.51	0.61	
Fall 2013	65	0.89	0.86	0.68	0.78	
Fall 2014	58	0.86	0.81	0.71		
Fall 2015	47	1.00	0.94	0.81		
Fall 2016	62	0.90	0.82			
Fall 2017	48	0.92	0.88			
Fall 2018	52	0.81				

Table 8: Freshmen Retention and Graduation by Major: MT

5.2 Facilities Engineering Technology

Cohort Year	N	Retention Rate		Graduation Rate		
		1st Year	2nd Year	In 4 Years	In 6 Years	In 8 Years
Fall 2008	7	1.00	0.86	0.29	0.43	0.43
Fall 2009	3	0.33	0.33	0.00	0.33	0.33
Fall 2010	4	1.00	0.75	0.25	0.75	0.75
Fall 2011	6	0.83	0.83	0.50	0.67	0.67
Fall 2012	8	0.88	0.88	0.38	0.50	
Fall 2013	8	0.88	0.62	0.38	0.50	
Fall 2014	18	0.72	0.72	0.33		
Fall 2015	8	0.88	0.62	0.62		
Fall 2016	20	0.60	0.70			
Fall 2017	3	0.33	0.33			
Fall 2018	11	0.73				

Table 9: Freshmen Retention and Graduation by Major: FET

5.3 Marine Engineering Technology

Cohort Year	N	Retention Rate		Graduation Rate		
		1st Year	2nd Year	In 4 Years	In 6 Years	In 8 Years
Fall 2008	29	0.62	0.59	0.24	0.52	0.55
Fall 2009	24	0.83	0.62	0.21	0.42	0.42
Fall 2010	30	0.87	0.83	0.27	0.60	0.63
Fall 2011	33	0.82	0.82	0.39	0.61	0.64
Fall 2012	46	0.80	0.72	0.35	0.59	
Fall 2013	32	0.81	0.78	0.47	0.69	
Fall 2014	39	0.90	0.74	0.28		
Fall 2015	27	0.93	0.78	0.63		
Fall 2016	32	0.81	0.66			
Fall 2017	45	0.76	0.67			
Fall 2018	39	0.79				

Table 10: Freshmen Retention and Graduation by Major: MET

5.4 Engineering Technology (MET + FET)

Cohort Year	N	Retention Rate		Graduation Rate		
		1st Year	2nd Year	In 4 Years	In 6 Years	In 8 Years
Fall 2008	36	0.69	0.64	0.25	0.50	0.53
Fall 2009	27	0.78	0.59	0.19	0.41	0.41
Fall 2010	34	0.88	0.82	0.26	0.62	0.65
Fall 2011	39	0.82	0.82	0.41	0.62	0.64
Fall 2012	54	0.81	0.74	0.35	0.57	
Fall 2013	40	0.82	0.75	0.45	0.65	
Fall 2014	57	0.84	0.74	0.30		
Fall 2015	35	0.91	0.74	0.63		
Fall 2016	52	0.73	0.67			
Fall 2017	48	0.73	0.65			
Fall 2018	50	0.78				

Table 11: Freshmen Retention and Graduation by Major: ET

5.5 Mechanical Engineering

Cohort Year	N	Retention Rate		Graduation Rate		
		1st Year	2nd Year	In 4 Years	In 6 Years	In 8 Years
Fall 2008	24	0.71	0.54	0.29	0.38	0.42
Fall 2009	33	0.76	0.61	0.24	0.45	0.48
Fall 2010	26	0.81	0.65	0.19	0.50	0.50
Fall 2011	32	0.84	0.91	0.31	0.66	0.72
Fall 2012	39	0.87	0.77	0.44	0.62	
Fall 2013	42	0.86	0.76	0.36	0.64	
Fall 2014	34	0.76	0.65	0.35		
Fall 2015	59	0.75	0.59	0.39		
Fall 2016	37	0.76	0.68			
Fall 2017	57	0.91	0.77			
Fall 2018	41	0.76				

Table 12: Freshmen Retention and Graduation by Major: ME

5.6 Business Administration

Cohort Year	N	Retention Rate		Graduation Rate		
		1st Year	2nd Year	In 4 Years	In 6 Years	In 8 Years
Fall 2008	6	1.00	0.50	0.17	0.50	0.50
Fall 2009	11	0.64	0.36	0.45	0.55	0.55
Fall 2010	23	0.91	0.78	0.48	0.57	0.61
Fall 2011	13	0.85	0.85	0.62	0.85	0.85
Fall 2012	34	0.82	0.85	0.62	0.68	
Fall 2013	23	0.78	0.61	0.52	0.57	
Fall 2014	30	0.80	0.77	0.60		
Fall 2015	41	0.83	0.71	0.66		
Fall 2016	56	0.59	0.50			
Fall 2017	41	0.68	0.56			
Fall 2018	41	0.76				

Table 13: Freshmen Retention and Graduation by Major: BA

5.7 Global Studies and Maritime Affairs

Cohort Year	N	Retention Rate		Graduation Rate		
		1st Year	2nd Year	In 4 Years	In 6 Years	In 8 Years
Fall 2008	26	0.73	0.62	0.46	0.54	0.54
Fall 2009	22	0.77	0.73	0.64	0.73	0.73
Fall 2010	25	0.68	0.64	0.28	0.44	0.48
Fall 2011	22	0.82	0.73	0.64	0.68	0.68
Fall 2012	28	0.82	0.71	0.57	0.64	
Fall 2013	29	0.69	0.55	0.45	0.55	
Fall 2014	27	0.74	0.59	0.41		
Fall 2015	38	0.79	0.68	0.53		
Fall 2016	29	0.72	0.59			
Fall 2017	29	0.79	0.52			
Fall 2018	32	0.69				

Table 14: Freshmen Retention and Graduation by Major: GSMA